



The transformer series of Pulldozers do everything the standard series do plus you get narrow transport. 14' on the 24' model and 10' on the 18' model. The wings also adjust from -10° to +40° so you can **DO MORE...**



TRANSFORMER



Cut Channels: Raise both wings to cut flat bottomed channels. Also dig holes. Clean & grade ditches.



Terrace: One wing up to +40°. Other wing down to -10°. Axles in or out. Precision land forming.



Crown: Lower both wings to build a crown fast.



ELEVATE & RECLAIM

Pull dirt from hills and drains to elevate low areas.

Put a dirt cap over willows and cattails. Make more land productive.



SEED BED READY

Pulldozers are remarkable levelling machines.

Also used to dig ponds, bury rocks and cover brush piles.



ANGLE

Big capacity, the 24' model will easily pull 20 yds. of dirt.

Cut and maintain drainage, backslope to improve water flow, dig out big roots and rocks.

PULLDOZER



TRENCH: All models are available with the retractable trencher. Will simultaneously cut a trench up to 24" deeper than the blade. Quickly drain an area without moving as much dirt. For more information on Pulldozers and Transformers ph Bridgeview at 306-745-2711



Built Tough: This is the one scraper pan that isn't afraid to dig or transport rocks. When it's been designed, relentlessly tested and manufactured by Bridgeview you know **IT'S GOTTA BE TOUGH...**



Fill Faster: Dropped center blade section holds the scraper pan down so you get a level cut. Available serrated blades penetrate with more force per inch of blade for faster filling with less demand on your tractor, even in hard packed ground.

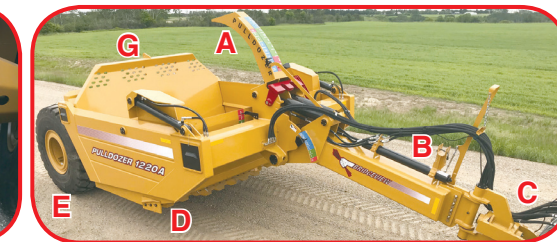


Ag Adaptor Hitch: With the semi-mount receiver installed on your tractor, coupling to your other ag equipment isn't a problem. Simply drop in the Ag Adaptor Hitch. No maneuverability lost.



1220A SCRAPER PAN

1220A's are tandem ready. When moving dirt further you can nearly double productivity. **Make More Land Productive:** Land values, wider equipment and precision farming demand maximum efficiency.



Unique Features: **A)** GPS tower is centered above the blade for easier set-up and more precise control. **B)** Ride control accumulator improves operator comfort at high speeds. **C)** Semi-mount design improves traction. **D)** Double-walled, clean, obstruction-free design. **E)** Two-wheeled design has less rolling resistance for easier pulling in heavy mud. **F)** Now tandem ready. Enclosed rear compartment protects push-off mechanism. **G)** Push-off gate travels past cutting edge for total cleanout. Sequencing valves provide one-lever control of apron lift, push off and reset. Very intuitive operation.



Why a semi-mount scraper pan: The biggest advantage is traction. With traction you can fill the scraper everytime. You won't be pulling out with half a load. You'll work in more difficult conditions and you'll make smoother cuts. When using water management software you'll have more precise depth control. You'll notice a huge difference when making that final cut.



BRIDGEVIEW

P.O. Box 4, Hwy. 22 West, Gerald, SK S0A 1B0

PH: 306-745-2711

U.S. customers: please phone for your local territory manager or find them by clicking on **Contact Us** at www.bridgeviewmanufacturing.com