

Our easy-mount hopper cone will add 200 - 1500 bushels to your existing bin.



Cone With Aeration

Optional inverted V aeration available in 18" or 24" .

Whether you set up 2 or 20, M&K cones are the hopper bottoms prairie farmers are choosing.

Manufactured in 12' to 27' diameter, and built to fit any make of bin. All cones are painted light grey on the outside. Inside paint is optional.

Manholes are standard equipment. Options include custom skids, ladders, anchors, remote lids and aeration. Check out the total package before you buy.



Manholes are standard equipment on all of our cones.



M&K hopper bottoms have the band facing down, rather than up. You don't have to go inside the cone to assemble your storage.



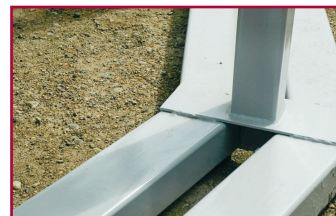
12" or 18" sliding gate.



Various sizes of remote opener lids available.



Optional skid base is 188 wall tubing available in single or double skid configuration.



4" x 43" Evertight anchors are available to secure your hopper bottoms.



Delivery available.
Book early for best delivery dates.
Trucking available for Alberta, Saskatchewan & Manitoba

Over 15 years of serving the farm community

M&K WELDING BINS & CONES

Box 4010, Melfort, SK S0E 1A0

Toll Free: 1-877-752-3004

PH: 306-752-4111 Fax: 306-752-9511

www.mkwelding.ca

sales@mkwelding.ca

Also Available:

- Steel floors 12' to 24'
- Bin Stiffeners
- Repair sheets for Butler
- Tier extensions for Westeel Rosco
- Leasing
- **Meridian Grain Bin dealer**
 (formerly Sakundiak)